



## E2M Installation Guide 3

### Installing The Enigma Managed Plugin IPTV

If you have followed Part 1 and 2 of my tutorials you have installed a fresh Open Atv image and set Tuners and Network ready for use, installed and setup autobouquet maker for satalite channels and installed E2i Player and Media Portal which we will cover in a later tutorial.

We will now install the the Enigma2 Managed Plugin ( E2M ) to get channels and basic Vod from your lptv supplier. We will look at two different installation methods, first being an installation via putty and the second via Vucc 0.8

You will need :-

Windows Pc

Network IP Address of your box

Username and Password from your provider

Firstly we will need the local IP address of the Enigma2 device that you are installing the plugin on. You can find this by ( With the remote control go to )

Menu/Setup/System/Network/Device Setup/Adapter Settings

You will now be on this screen



Write down the IP Address from under Current settings



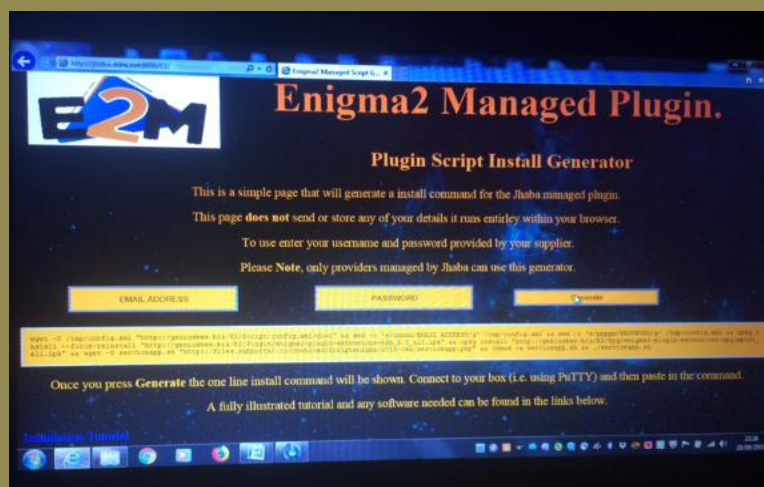
## Installing Via Putty

So let's move on :-

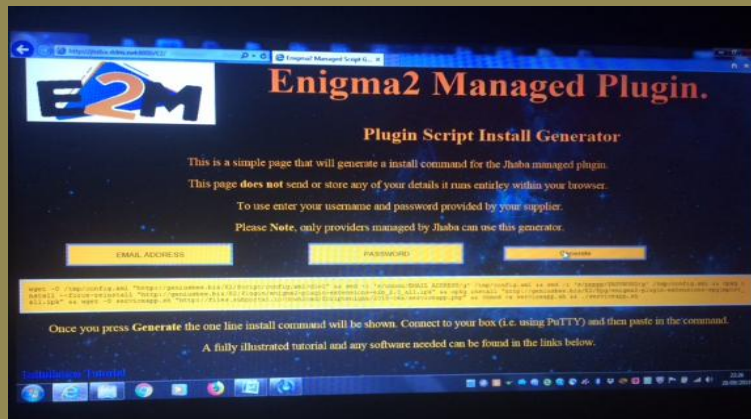
On your PC open a browser ( Internet Explorer Preferably, I will explain why later in the tutorial )

In the address bar copy and paste or type in :-

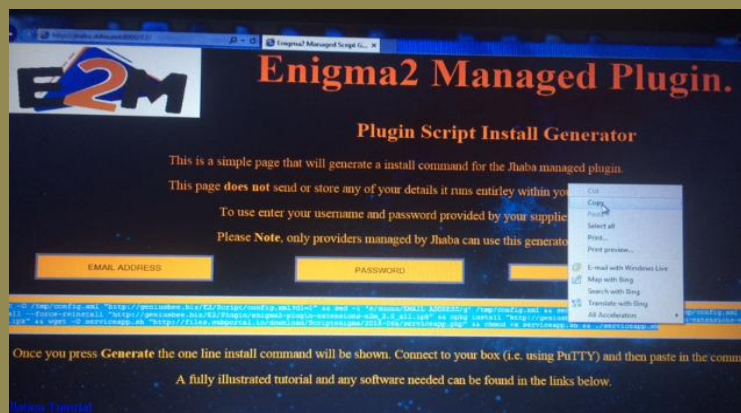
<http://jhaba.ddns.net:8000/E2> (Enter) It will open the script generator page



Insert your USERNAME and PASSWORD and press GENERATE



Your personalised script will appear on screen as shown above  
Pls follow this next step exactly

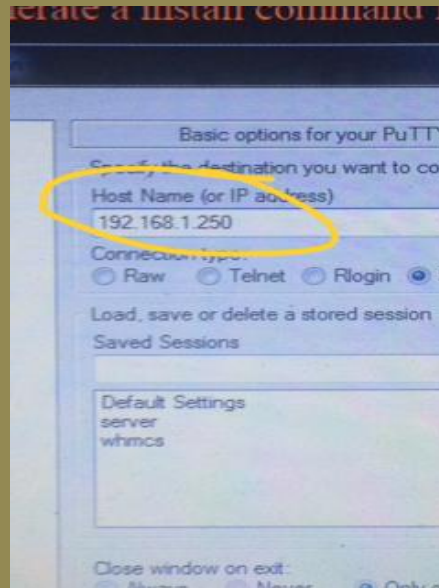
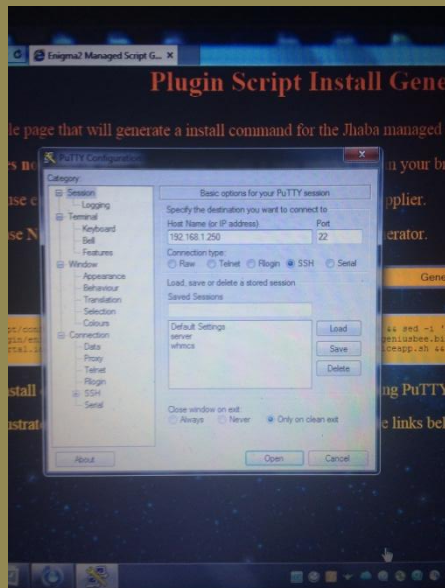


Highlight the full script so it turns blue, right click with your mouse and select COPY

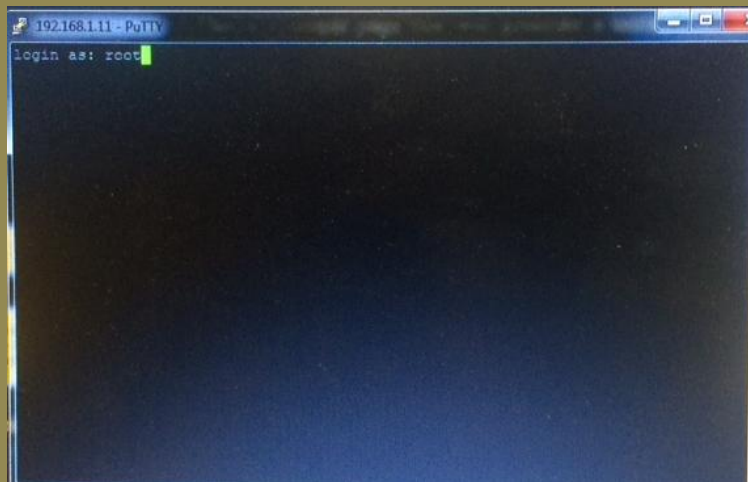


Look down the page now and click on Launch Putty ( **Internet Explorer is needed here to run  
putty direct without the need to download** )

A box will open asking what you would like to do with putty.exe,  
Click RUN



Putty will open as shown in first image above.  
Type in the IP Address of your device you wrote down earlier,  
make sure SSH is selected and click Open



The Command Line Interface of your Enigma2 Device will open.  
Type in **root** and press Enter





```
192.168.1.11 - Putty
Login as: root
root@germa155:~# wget -O /tmp/config.xml "http://geniusbee.biz/E2/Script/config
.xml?dl=1" && sed -i 's/uuuu/EMAIL ADDRESS/g' /tmp/config.xml && sed -i 's/pppp
p/PASSWORD/g' /tmp/config.xml && opkg install --force-reinstall "http://geniusbe
e.biz/E2/Plugin/enigma2-plugin-extensions-e2m_2.0_all.ipk" && opkg install "http
://geniusbee.biz/E2/Epg/enigma2-plugin-extensions-epgimport_all.ipk" && wget -O
serviceapp.sh "http://files.subportal.io/download/Scriptenigma/2018-06a/servicea
pp.php" && chmod +x serviceapp.sh && ./serviceapp.sh
```

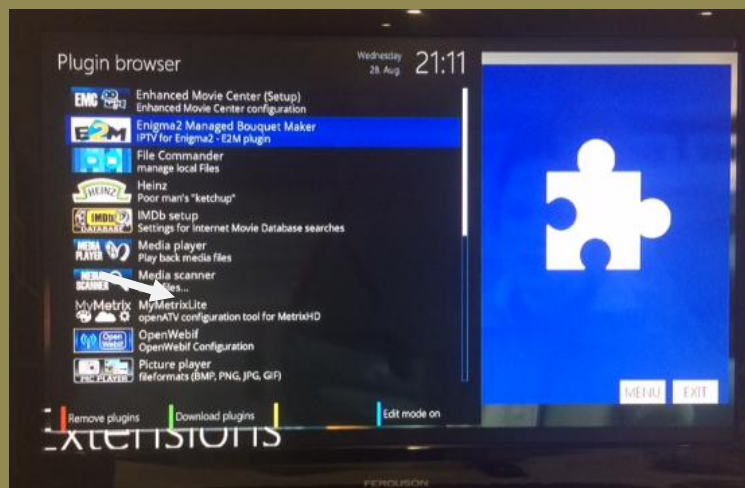
Now simply right click on the green square in the CLI and your script will be automatically be pasted in

Now press Enter and let the script go to work.

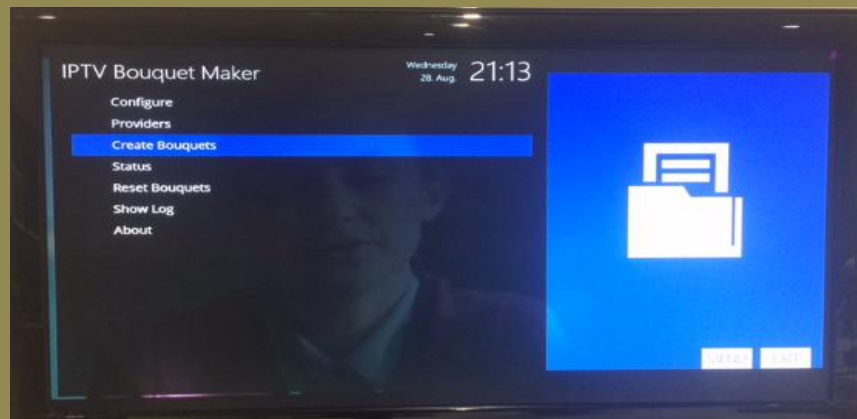
After around 30 seconds your box will go down for reboot and putty will tell you that the session has closed. You can now close putty and your browser and go to your Enigma2 box.

## On Your Enigma2 Device

After Reboot on your remote press  
Menu/Plugins



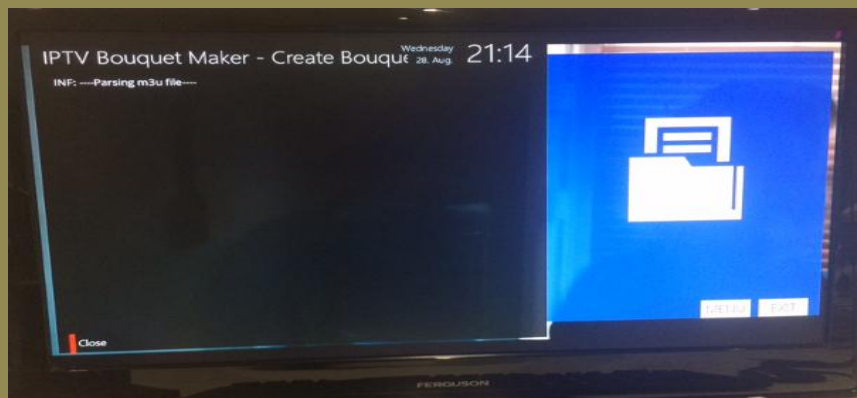
Go to the newly installed E2M Plugin and press OK to open the plugin.



Go down to Create Bouquets and press OK.



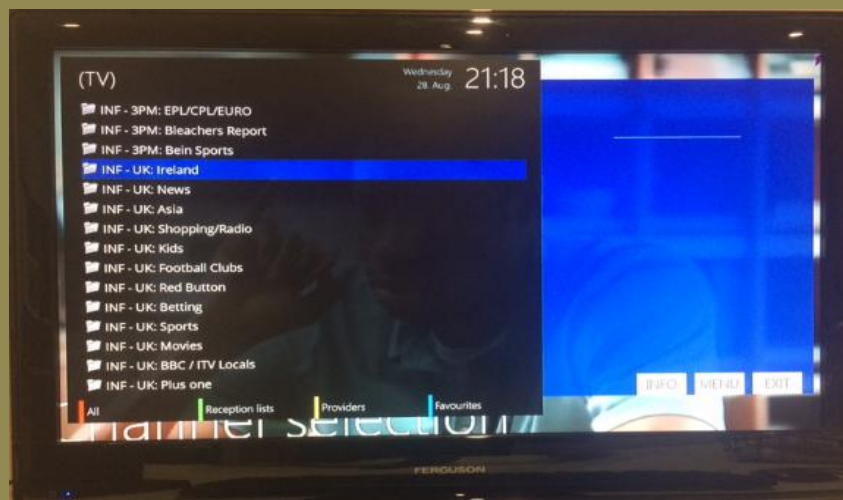
At this screen press yes to Proceed.



Your Channel Bouquets and Epg will now be Downloaded and created on your device.



When it is finished, press exit twice then restart the Gui of your box



After your box restarts, from the Tv screen press the up arrow and then the **Blue** button to see your newly installed bouquets

Any questions can be sent to us via the contact link on the script generator web page.